

# PWB2400



## FEATURES:

- Li-Ion LFP battery module
- Wireless Charger
- Solar Charging
- Fast Charging integrated 1h 80%
- Parallel Connector
- EPS Emergency power supply



### Output specifications

Output power (Continuous)	watt	2400
Output power peak (1.5s)	watt	4800
Frequency	Hz	50
Voltage	V	230
Phase (s)		1



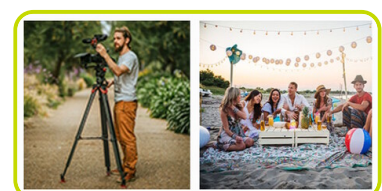
### Battery specifications

Battery (Type)		Li-Ion LFP
Battery rated Voltage	VDC	51.2
Battery design life @80% DoD	cycles	2000
Battery Nominal capacity (sizes)	W/h	2150



## General Description

PWB Portable Power Station is a universal Battery Energy Storage system ideally suited to a range of applications, delivering reliable power in the most cost effective and environmentally sensitive way. Energy stored within the unit is converted electronically into AC power. Power can be stored from connection to the grid, from a generator or solar PV to ensure the most efficient, lowest maintenance and best environmental impact is achieved. Real time monitoring is provided by on board display to ensure an efficient usage.



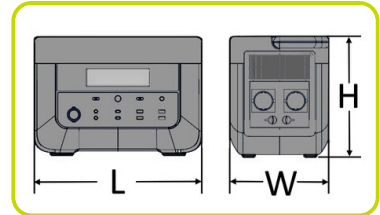
### Input specifications

Max single-phase input	W	1800
a) Charging Times @80%	h	1
b) Charging Times @100%	h	2
Max DC Solar Charging	W	400
a) DC/Solar Charging Times @80% (with 400W of solar panels and best solar lighting condition)	h	5
b) DC/Solar Charging Times @80% (with 200W of solar panels and best solar lighting condition)	h	8
Car lighter charging (12V DC)	A	8
Car lighter charging time @80%	h	19



### Installation data

Length	(L) mm	496
Width	(W) mm	266
Height	(H) mm	350
Weight	kg	29
Discharging temperature range	°C	-10...40
Charging temperature range	°C	0...40
Carton box dimension LxWxH	mm	620x380x490
Total weight (carton box included)	kg	35



### Instruments, controls & connections

Inverter protection Short Circuit	✓
Inverter protection Overload	✓
Inverter protection Over Temperature	✓
Inverter protection Low Battery	✓
System status control panel	✓
Battery condition	✓
Solar charge controller MPPT	✓
Parallel connector	✓



### Output:

Schuko AC ports 230V	4
Car socket (DC 12V/10A)	1
DC 6514 (12V/5A)	2
USB-A 12 W Max (5V/2.4A)	2
USB-A Quick 24W Max (5/9/12V   3/2.2/2 A)	2
USB-C 100 W Max (5/9/12/15/20V   3/5A)	2
Wireless charger	2



**Optionals available:**

- Solar Panel PWB Power Station •
- Parallel wires PWB Power Station •



**• Optional | Solar Panel PWB Power Station - specs:**

Solar Panel Rated Power	W	200
Solar Panel Rated Voltage	V	20
Solar Panel Rated Current	A	10
Output interface mode	Type	MC4
Included cables to connect power station		✓
Solar Panel dimension LxWxH	mm	2390x564x25
Foldable dimension LxWxH	mm	635x564x45
Number of Folding		4
Weight	kg	8.4



**• Optional | Parallel wires PWB Power Station - specs:**

Parallel connection   Capacity + Power	< W	3600
Parallel connection   Cable length	cm	110



**Examples of parallel available:**

<b>Parallel models:</b>	PWB1200 PWB1200	
Parallel Capacity	W/h	2150
Parallel Power	W	2400

<b>Parallel models:</b>	PWB1200 PWB2400	
Parallel Capacity	W/h	3225
Parallel Power	W	3600

<b>Parallel models:</b>	PWB2400 PWB2400	
Parallel Capacity	W/h	4300
Parallel Power	W	3600



The information is aligned with the Data file at the time of download.  
Printed on 16/04/2025 (ID 185275)

©2025 | PR Industrial S.r.L unipersonale – Loc. Il Piano – 53031 Casole d'Elsa (SI) – ITALY. Company subject to the management and coordination of Generac Power Systems Inc. | All rights reserved | Image shown may not reflect actual package. Specifications subject to change without notice



**Two Great Stores to choose from...**

7 Cemetery Rd,  
Mackay QLD 4740  
Phone 07 4957 6123

Unit 16, 547 Woolcock St,  
Mt Louisa, Townsville QLD 4814  
Phone 07 4774 7344