

12V

7Ah

NLP20



NOCO

INSANE PERFORMANCE. LITHIUM POWERSPORT BATTERY.™

2X

MORE POWER.

10X

MORE STARTS.

5X

LONGER LIFE.

DYNAMIC BMS.

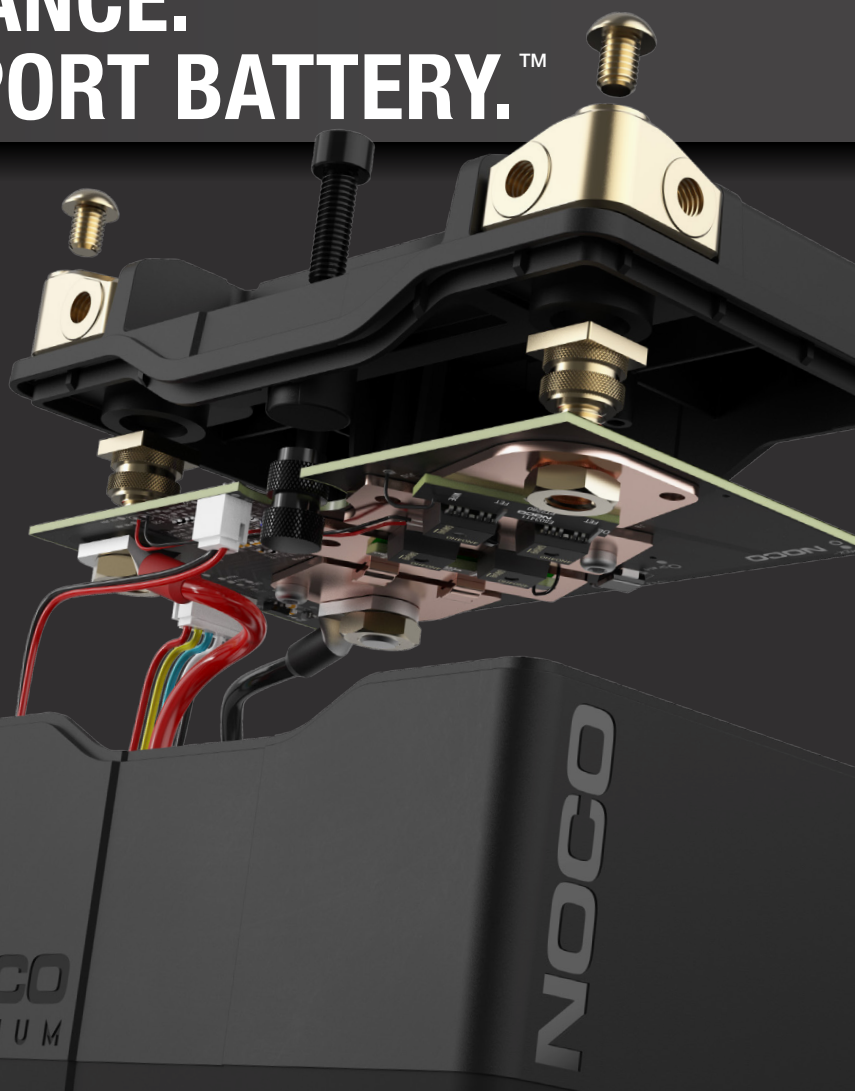
Equipped with an auto-enabled, advanced battery management system that provides maximum protection, performance, and bi-directional cell equalization for long-lasting stability. No BMS reset needed.

ACTIVE PROTECTION.

Protects against over-charge, extreme-heat, short-circuit, over-discharge, extreme-cold, and over-current.

SHOCK ABSORPTION.

Designed with a custom rubber dampening base and foam inserts to extend the life of the battery and keep connections secure.



Batterypro

www.a1batterypro.com.au

Two Great Stores to choose from...

7 Cemetery Rd,
Mackay QLD 4740

Phone 07 4957 6123

Unit 16, 547 Woolcock St,
Mt Louisa, Townsville QLD 4814

Phone 07 4774 7344

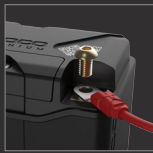
UNIVERSAL MOUNTING.

Modular spacers can be added to alter the size and allow the battery to be safely and securely mounted. A removable mounting block allows the battery to fit more applications. The threaded insert enables direct-mounting for additional simplicity and security.

Removable Mounting Block
Threaded Insert
M8-1.25 Thread Size.
Hex Screw
M8-1.25x20mm



FEMALE.



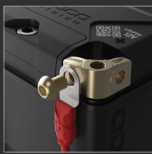
SIDE.



TOP.



FRONT.



MULTI-CONNECTION TERMINALS.

Equipped with premium IP66 waterproof copper PCB plates. NLP Terminals can be mounted from the front, side, or top, and can be removed altogether depending on the application.



RAPID RECHARGE.

Use the Lithium mode on a Genius charger to fully recharge an NLP battery in minutes. See Genius models and charging times below.

COMPATABLE SIZES.

BCI SIZES

BTX20HL-BS
B16L-B
BTX15L-BS
BTX20L
B18L-A
BTZ20L
B16CL-B
B50-N18L-A3
BTX20L-BS
BTX15L

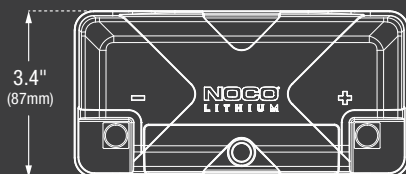
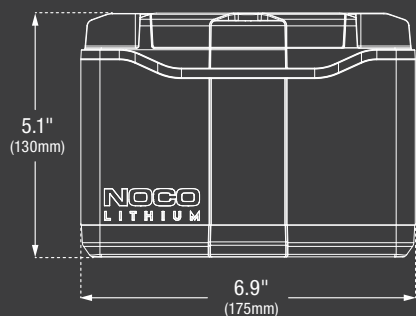
YUASA SIZES

GYZ20L
GYZ20HL
YTX20HL
YIX20HL
YTX20HL-PW
YTX20HL-BS
YTX20HL-BS-PW
YIX20HL-BS
YTX15L
YTX20L
YTX15L-BS
YTX20L-BS
YB16HL-A-CX
YB16L-B
YB16CL-B
SYB16L-B
Y50-N18L-A3

ETX SIZES

ETX16
ETX16L
ETX20L

WHAT'S IN THE BOX



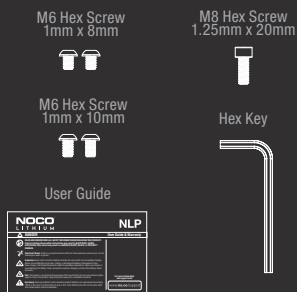
LxWxH Minimum.

6.9" x 3.4" x 5.1"
(175mm x 87mm x 130mm)

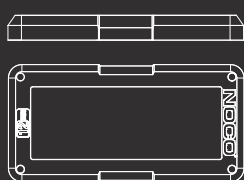
LxWxH Maximum.

8.07" x 4.53" x 7.36"
(205mm x 115mm x 187mm)

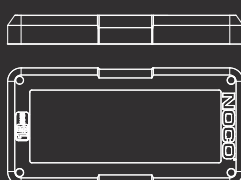
*Accessories not to scale with NLP20



(1) 0.5" 12mm Spacer



(3) 0.6" 15mm Spacer



(4) 0.3" 7.5mm Spacer



NOCO

NOCO

RECHARGE TIME

GENIUS1	420 Minutes
GENIUS2	210 Minutes
GENIUS5	84 Minutes
GENIUS10	42 Minutes

TECHNICAL SPECIFICATIONS

BCI SIZE:	20
CHEMISTRY:	Lithium Iron Phosphate (LiFePO4)
NOMINAL VOLTAGE:	12.8
AMP-HOURS:	7
WATT-HOURS (WH):	89.6
STARTING CURRENT:	600
CHARGING VOLTAGE (V):	14.6V
CHARGING CURRENT (A):	21A (Max)
OPERATING TEMPERATURE:	-20°C to 60°C
CHARGING TEMPERATURE:	-10°C to 50°C
STORAGE TEMPERATURE:	-20°C to 60°C
WEIGHT:	3.73 lbs (1.70 kg)
VOLUMETRICS:	<p>Retail Packaging: Dimensions: 7.83" x 3.7" x 8.15" Weight: 5.24 lbs UPC: 0-46221-19010-6</p> <p>Master Carton: Dimensions: 16.73" x 8.98" x 8.82" Weight: 22.70 lbs Quantity: 4 UC: 10046221190073</p> <p>Inner Carton: Dimensions: 8.50" x 8.15" x 4.06" Weight: 5.48 lbs</p>